

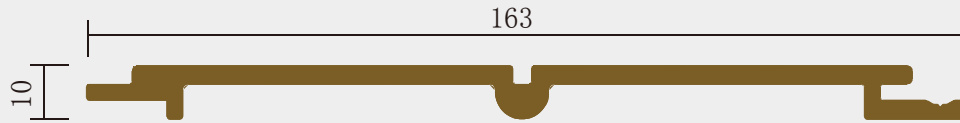
# Indoorwpc Wall Panel

**CWA-163**



# 1

## Indoorwpc Wall Panel Show



- ▶ Brand: COOWIN GROUP
- ▶ Material: Wood WPC composite
- ▶ Item: CWA-163
- ▶ Size(mm): 163\*10
- ▶ Color: Refer to the color below
- ▶ Surface: 3D Embossing, classic plate
- ▶ Standard Length: 2.8m or custom
- ▶ Composition: 45% PVC + 20% calcium carbonate + 28% wood powder + 7% additives
- ▶ Advantage: Moisture-proof, anti-corrosion, anti-insect, long service life.
- ▶ Use scene: Widely used in tooling home improvement, Hotels, guest houses, store decoration, architecture, billboard...

# 2

## Indoorwpc Product Colors



White Oak



Spruce



Olive green



Sky blue



Thai pomelo



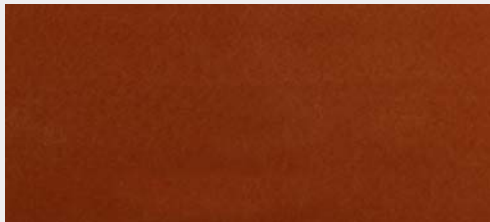
Teak



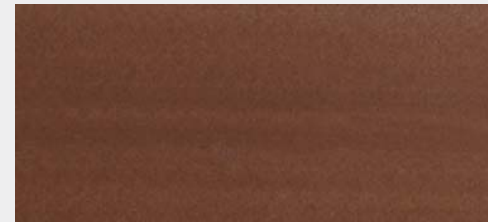
Cedar



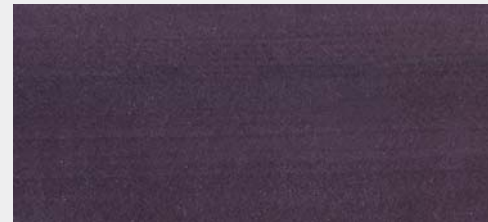
Gray



Rosewood



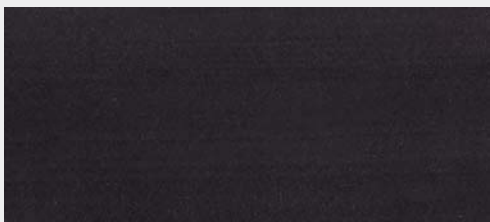
Walnut



Sandalwood



Bronze



Black

3

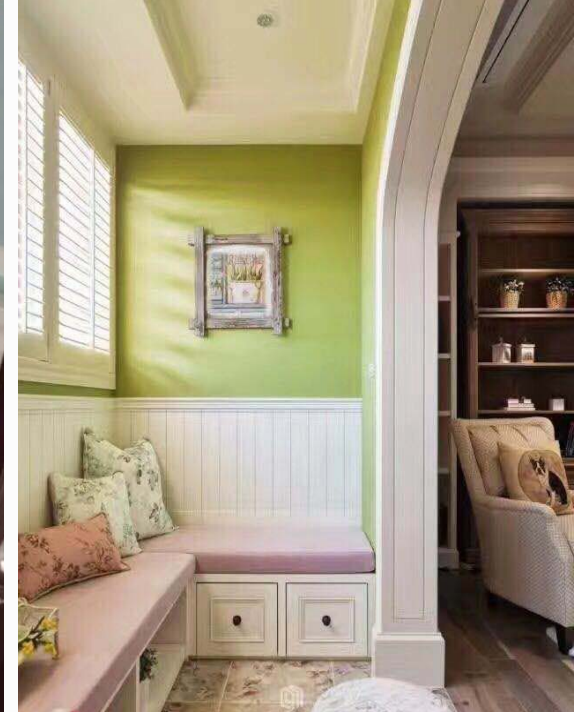
## Indoorwpc Product Surface





# 4

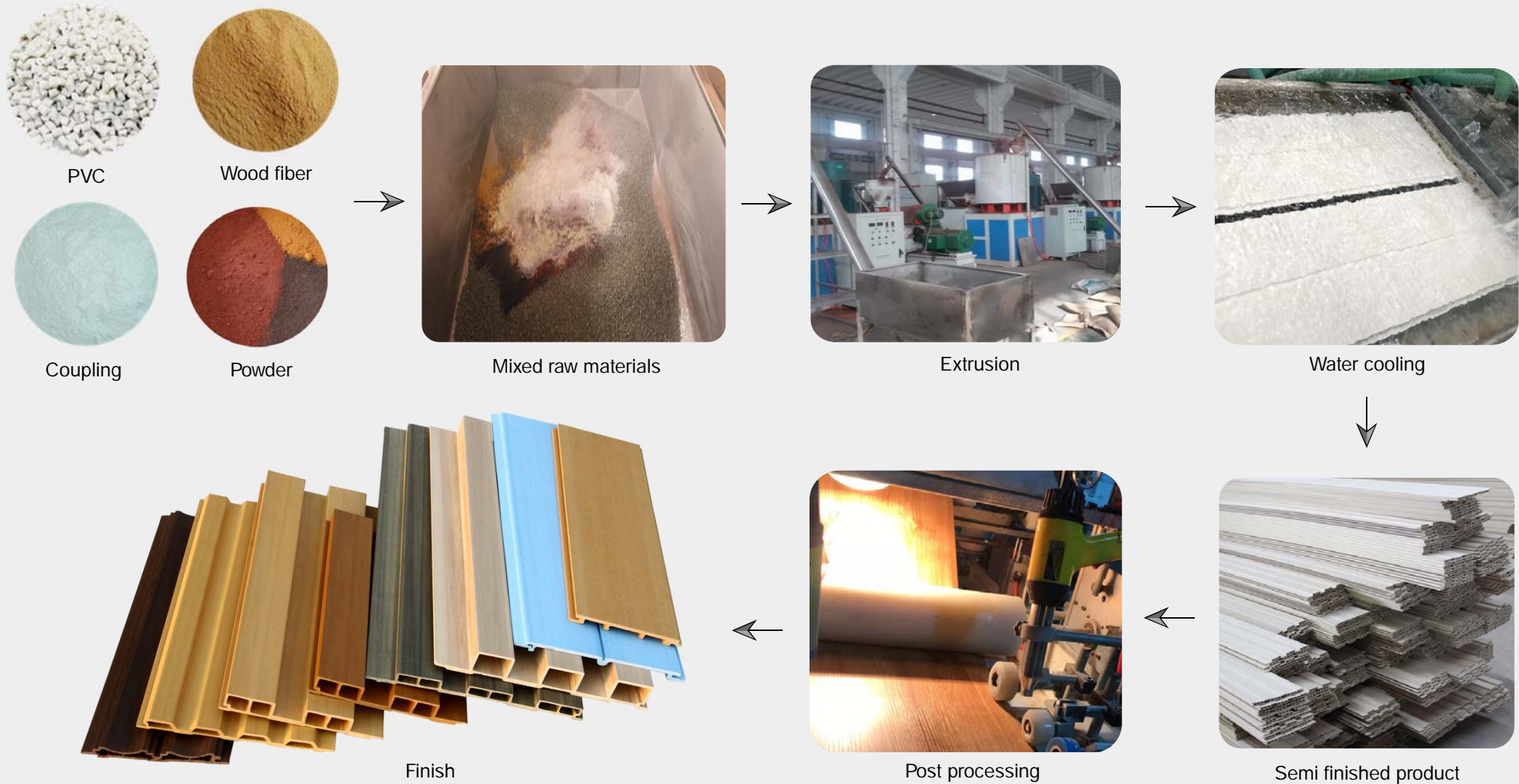
## Indoorwpc Product Application Scenario



# 5

## Indoorwpc Materials Production Process

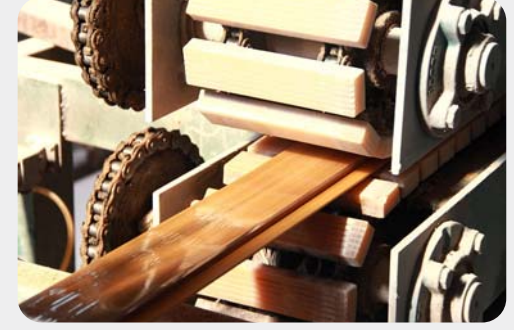
WPC are composite material made of wood fiber/wood flour and thermoplastics(includes PE.PP,PVC etc)





# 6

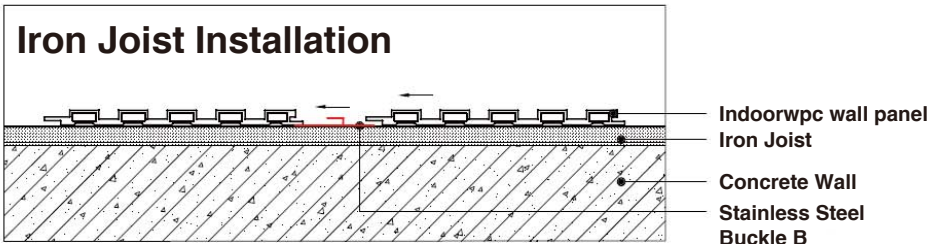
## COOWIN Indoorwpc Product Workshop



# 7

## Easy installation

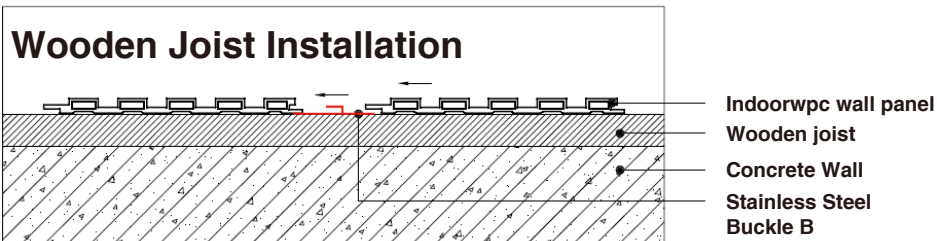
**Note:** Indoorwpc wall panels are available in a variety of styles, but the installation methods are similar. The wall panels are designed with connecting slots. They can be installed with connectors, or they can be nailed directly to the Joist of the wall with a gas nail gun. The installation efficiency is extremely high.



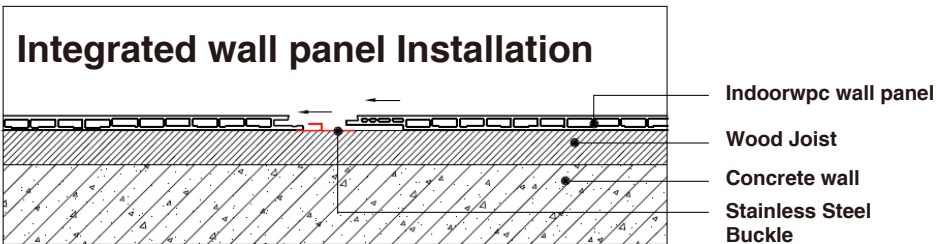
#### Stainless Steel Buckle B



#### Iron Joist



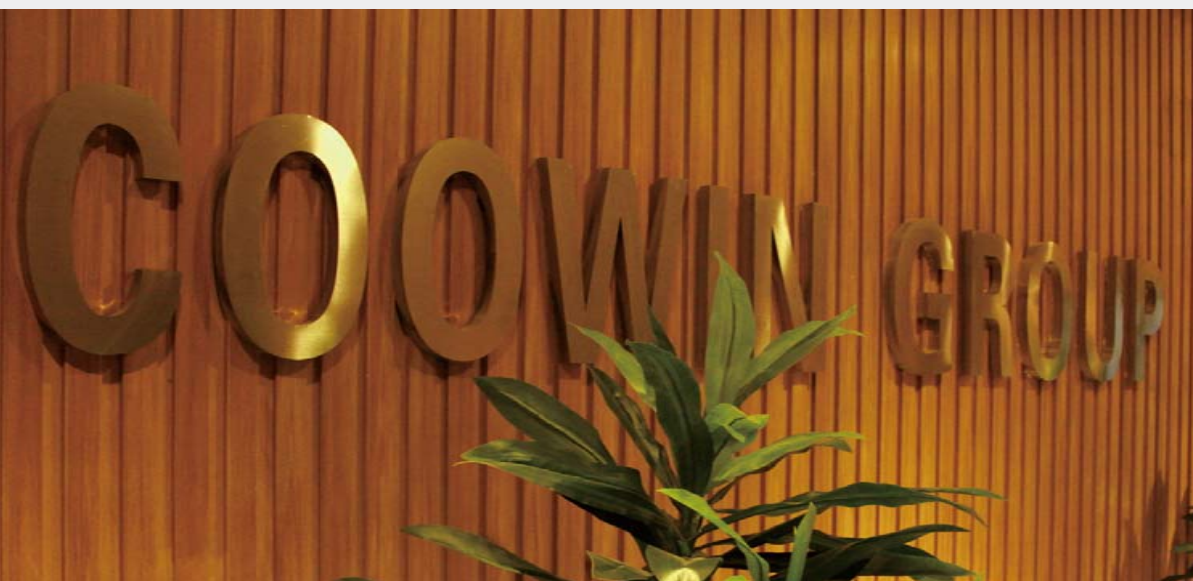
**Note:** Use iron joist or wood joist to do the wall leveling job, keep as installation foundation. Fix the first piece of great wall panel on the joist, insert the stainless steel buckle B at wall panel's side, then install the next piece of great wall panel.



#### Stainless Steel Buckle



# Company Introduction



COOWIN GROUP was established in 2000 and the headquarters is located in Qingdao, China. Owing independent high technology manufacturing factory and sales service company. COOWIN is one of the leaders in wood plastic industry. COOWIN has engaged in WPC materials producing, R&D, selling and developing potential market demands for many years. COOWIN's products has been exported to more than 90 countries worldwide and has received broad customers' recognition in both production quality and our service. As China's first batch of wood plastic material manufacturers also R&D leaders, COOWIN has passed the national environmental protection inspection every year since 2010. Meanwhile COOWIN has invested heavily in WPC technology innovation, production equipment updating and environmental pollution control system.

#### Main products:

COOWIN now has 2 series of main products, outdoor and indoor products.

1. Outdoor Series: WPC decking, WPC wall siding, outdoor handrail, pergola, bench, flower box and other products used for outdoor place.
2. Indoor Series: Indoorwpc ceiling, Indoorwpc wall siding, Indoorwpc trim, Great Wall board, sound absorber board and other decorative materials for indoor use.
3. In addition, we can also produce customized material based on customer's demands.

#### COOWIN GROUP

Qingdao barefoot construction material Co., Ltd  
No. 220, North Side of the High-Speed Road, Huihu Village, Xinhe Town,  
Pingdu City, Qingdao City, Shandong Province, China

Web: [www.coowingroup.com](http://www.coowingroup.com)  
Email: [coowingroup@coowinwpc.com](mailto:coowingroup@coowinwpc.com)

Tel: +86-532-67731461  
MP: +86 17685736353(WhatsApp)

Fax: +0086-532-67731463  
WeChat: 17685736353